

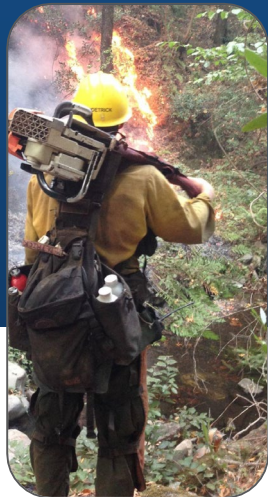


*Early Wildfire Detection, Tactical Intelligence, and
Prescribed Fire Applications for Arizona*

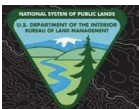
Mikayla Baker
State Government Affairs Manager

Arizona Auditing Process

Our Mission is to Stop the Spread of Catastrophic Wildfires



Pano AI provides world class **technology tools** to the **emergency managers** on the front lines of the wildfire crisis. We empower them to reduce the harm of natural disasters, and do so safely, even as the threat grows.



Pano offers an integrated, end-to-end solution for wildfire awareness

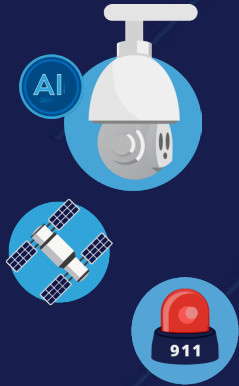
Detection

Confirmation

Dissemination

Response

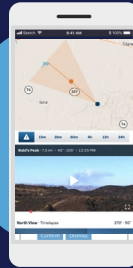
Review



Multiple data feeds
(i.e. cameras,
satellites,
911 calls, etc.)



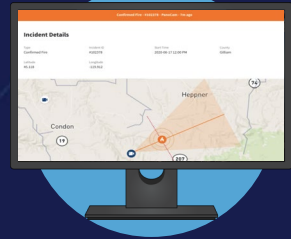
Pano 360
web platform with
360-degree
visibility and AI
smoke detection



Pano 360
Mobile Site and
SMS Alerts
with live video &
timely updates



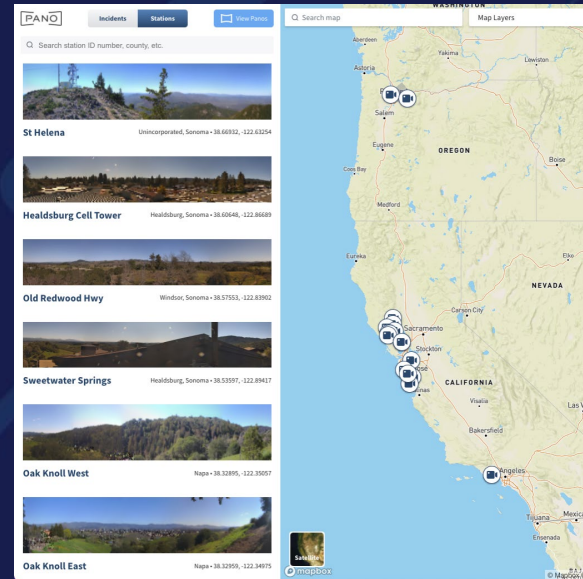
Pano enables an
informed rapid
response to knock
down wildfires &
maintain safety



Pano creates an
institutional
memory enabling
review of incidents,
timelapses and data

Pano's Key Differentiators Helps Firefighters Prevent Catastrophic Wildfires

Combining hardware, artificial intelligence (“AI”), and web-based software in a single easy-to-use platform



Cutting-Edge Hardware

provides advanced imagery via two rotating cameras, capturing an ultra-high-definition 360° panorama every minute

AI Detection Backed By Human Intelligence

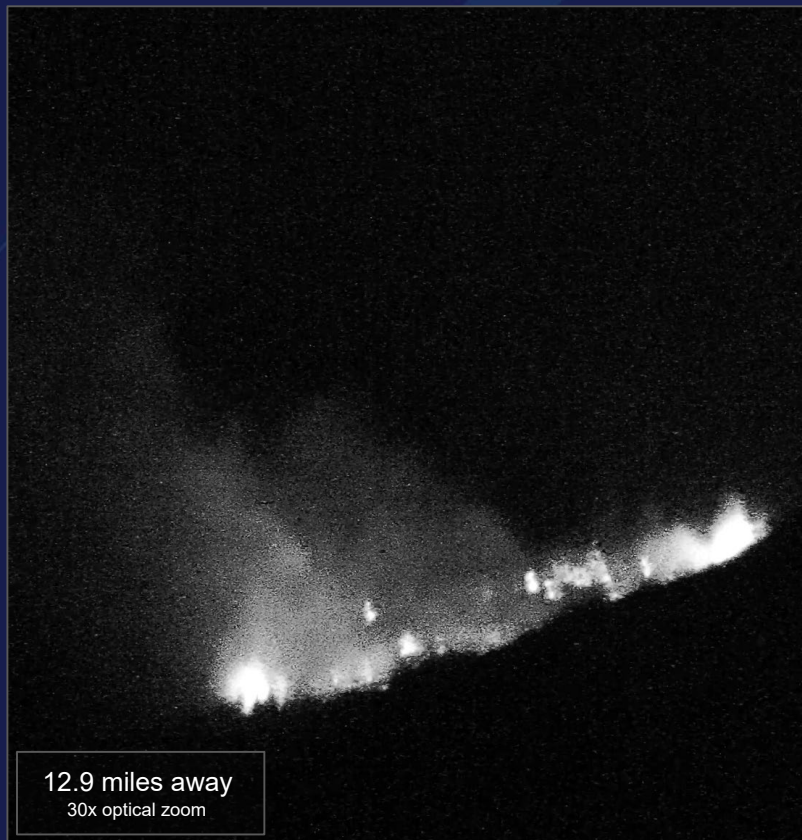
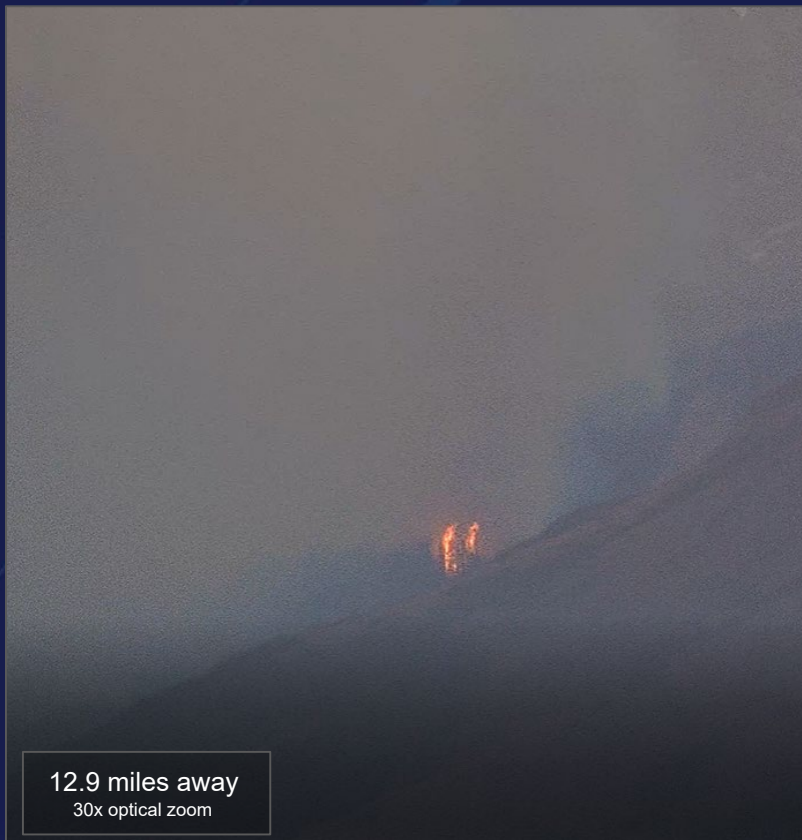
Intelligence center monitors for the first indications of smoke 24/7, across the entirety of the geographic coverage area

Easy-to-use Interface

unifies advanced features developed with partner utilities including asset proximity, zoom-to-investigate, incident triangulation, and alerts in a single platform

Industry Leading Optical Zoom & Image Quality

With 30x optical zoom Pano Stations can provide real-time visibility into incidents from miles away - both in daylight and nighttime conditions - images from the Shedhorn Mountain Fire shown below



Caribou Targhee USFS Prescribed Fire-2023

View from Relay Ridge Station



Caribou Targhee USFS Prescribed Fire-2023

View from enabled Pano optical zoom feature



Night Time Detection & Optical Zoom:

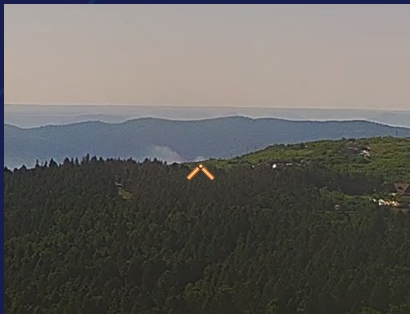


Bear Creek Fire - June 16, 2024

Pano Colorado network collaboration in action: CORE & Xcel Pano cameras triangulated incident on remote USFS lands with no vehicle access on a red flag day

Detection

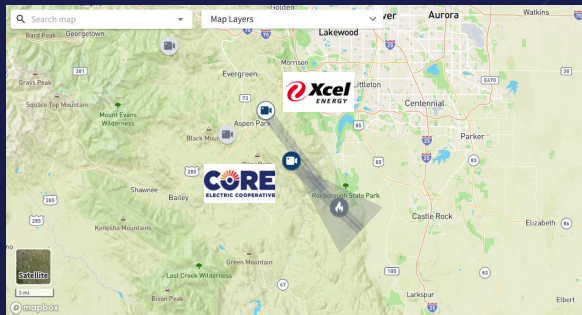
Pano detection time
9:10 am MT



Pano alerts to first responders included triangulated video of smoke in the area of Bennett Mountain.

Confirmation

Response initiated
9:54 am MT Fire is .25 acres



Based on Pano's visual confirmation and red flag conditions, helitack response initiated by Douglas County. Pano's triangulation of specific location enabled rapid response.

Response

Fire Suppressed
7:00 pm MT Fire stopped at 3 acres



Douglas County Helitack was supported by USFS Helitack. 30 USFS firefighters joined the county crews on the ground to employ direct suppression tactics.



“Without question, the Bear Creek Fire would have grown considerably larger without the rapid response of H-5TA and Douglas County Helitack on a red flag day.”

-Mike Alexander, deputy director for Douglas County OEM

End-to-End Service Delivery Across Entire Customer Journey

Viewshed / Network Design / GIS

Illustrative Tower Selection | Digital Elevation Modeling | Google Earth and Satellite Imagery Verification

Site Audit

Path to Power | Height & Centerline | View Confirmation

Site Selection & Acquisition

Research | Pre -Audit Checklist | Physical Audit | Internal Approval | Customer Approval

Legal / Contracting / Compliance

Lease Agreements

Logistics & Supply Chain

Internal Hardware Preparation

Installation & Technical Program Management

Installer Preparation | Installation

Pano Intelligence Center & Support

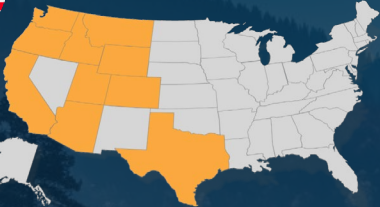
24 x 7 x 365 Availability | Purpose -built for wildfire situational awareness



Globally Recognized and Trusted



10 US States



5 AUS States



1 CA Province



Pano for Utilities & Renewables



Pano for Landowners & Resorts



Pano for Gov't



FAST COMPANY

The World's Most Innovative Companies 2023

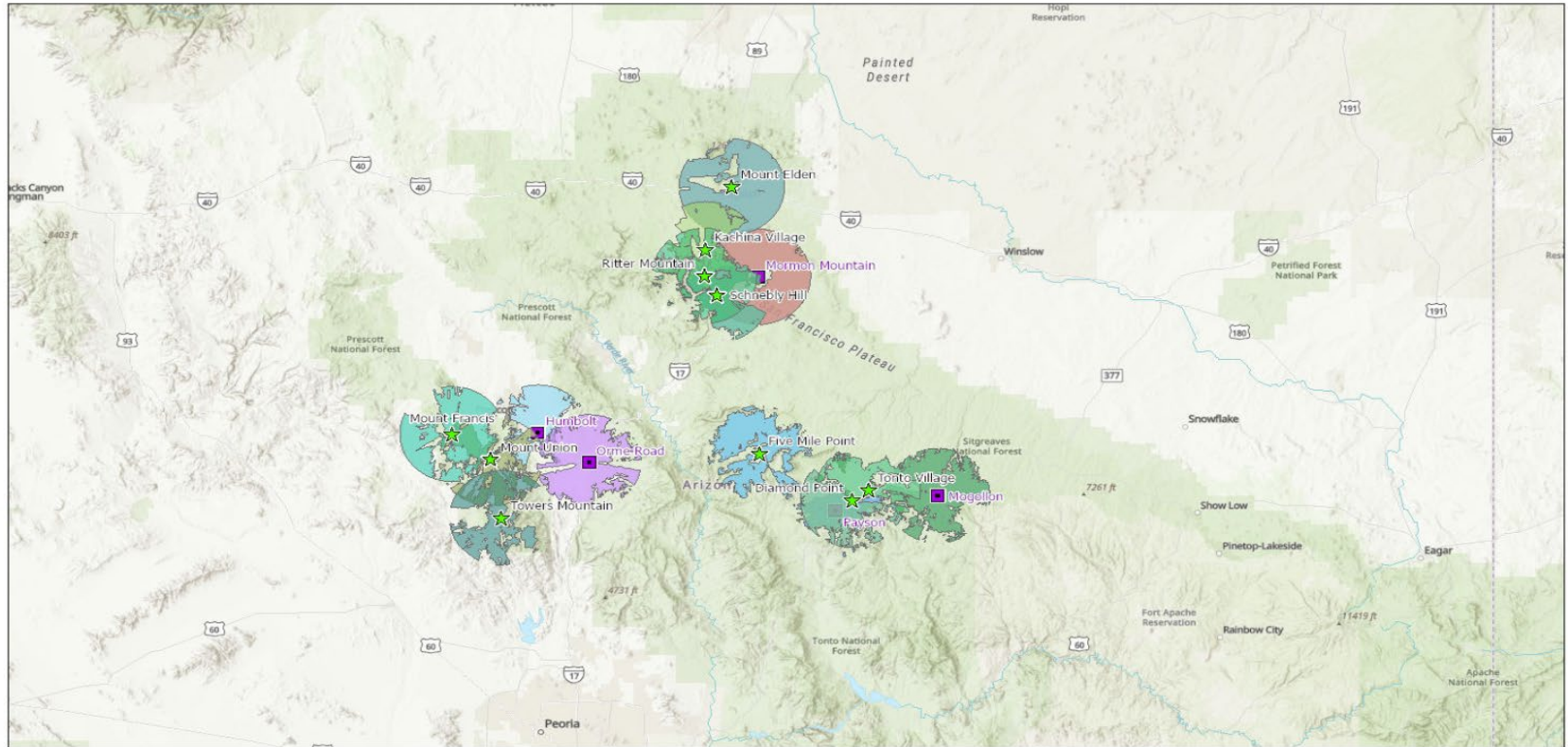
GTI
Global TD-LTE Initiative

AWARD
T-Mobile

WORLD ECONOMIC FORUM

2023
Technology Pioneer

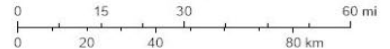
APS Current & Planned Pano Deployments



12/12/2024

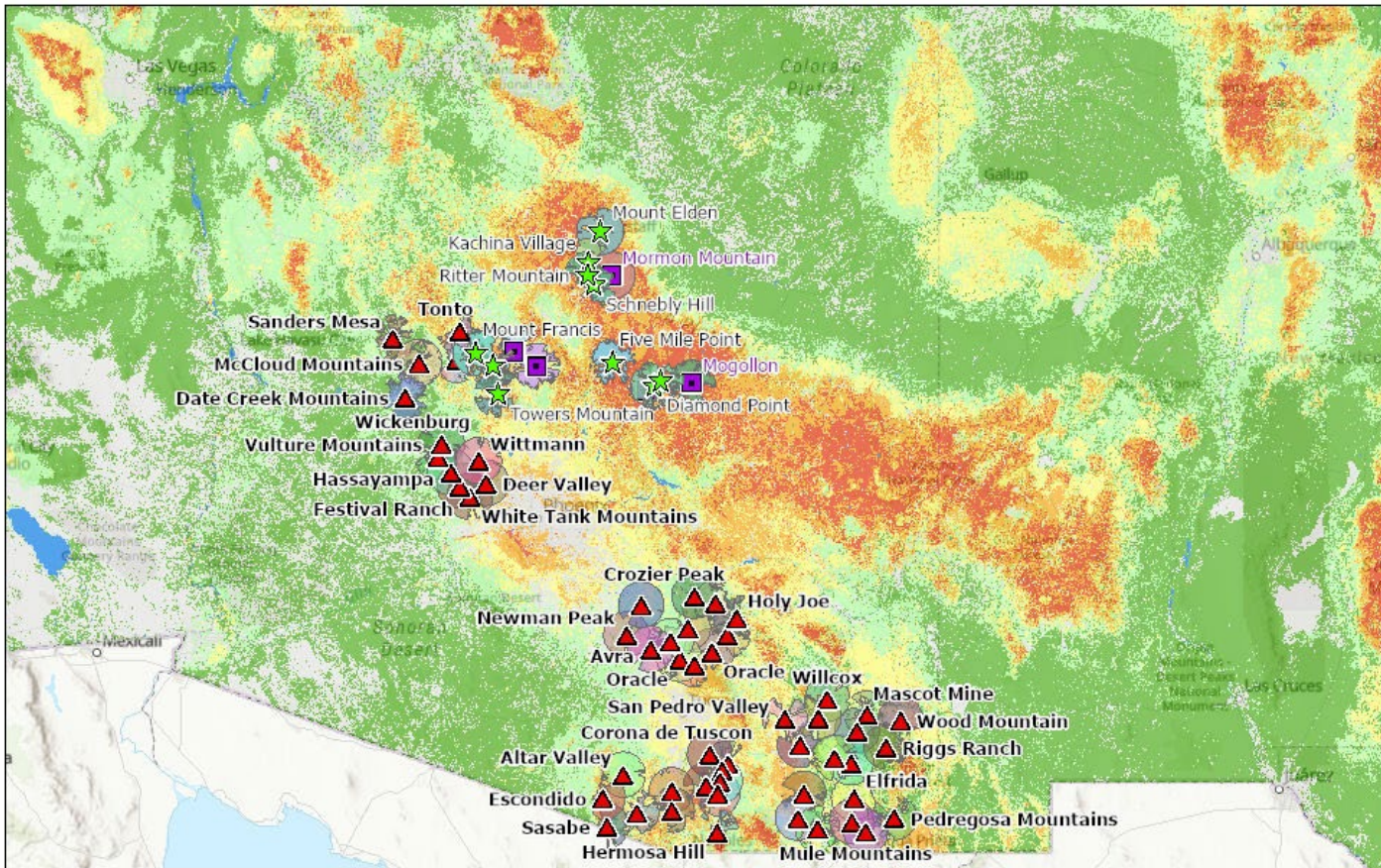
- | | | | |
|----------------------|-------------------------------|----------------------|---|
| Pano Stations | Mount Union | Multi Coverage | Payson |
| Viewsheds [10 Miles] | Ritter Mountain | In Flight Stations | Combined In-Flight and Current Viewsheds [10 Miles] |
| Diamond Point | Schnebly Hill | Viewsheds [10 Miles] | Single Coverage |
| Five Mile Point | Tonto Village | Humbolt | Multi Coverage |
| Kachina Village | Towers Mountain | Mogollon | World Hillshade |
| Mount Eiden | Combined Viewsheds [10 Miles] | Mormon Mountain | |
| Mount Francis | Single Coverage | Orme Road | |

1:1,450,246



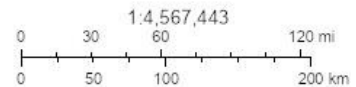
Esri, TomTom, Garmin, FAO, NOAA, USGS, Bureau of Land Management, EPA, NPS, USFWS, Esri, CGIAR, USGS

Fire Risk for Arizona- NIFC

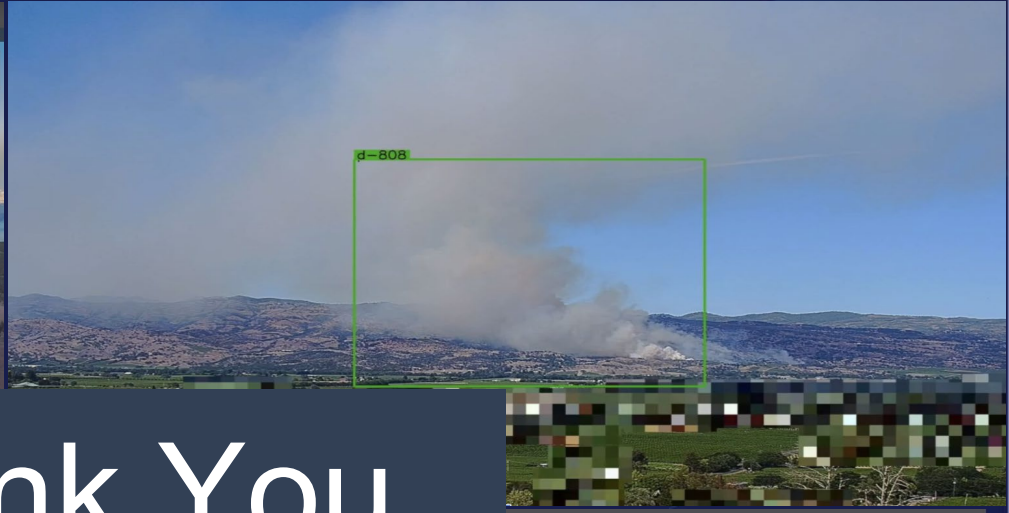
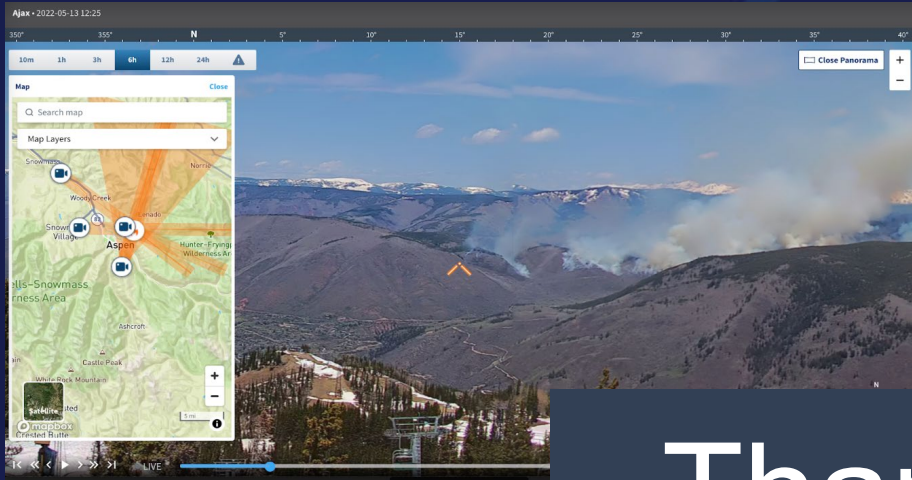


12/12/2024

<ul style="list-style-type: none"> Pine Stations Viewshed (10 Miles) Standford Point Five Mile Point 	<ul style="list-style-type: none"> Mount Francis Mount Union Ritter Mountain Schreibly Hill Tonto Village 	<ul style="list-style-type: none"> Flight Stations 	<ul style="list-style-type: none"> Mormon Mountain Oracle Road Playon Combined In-Flight and Current Viewsheds (10 Miles) Single Coverage 	<ul style="list-style-type: none"> Viewsheds Altar Valley Arivaca Arivaca Junction Avila 	<ul style="list-style-type: none"> Crozier Peak Deer Creek Mountains Desampson Davidson Canyon Deer Valley 	<ul style="list-style-type: none"> Duckville Ethos Escondido Festival Ranch Hasseayampa McCloud Mountains 	<ul style="list-style-type: none"> Kivland Lewis Springs Mammoth Mascot Mine McCloud Mountains Oracle 	<ul style="list-style-type: none"> Mule Mountains Newman Peak Noble Oak Wells
--	---	--	---	--	--	---	---	---



Funding for this project provided by USDA Forest Service, Fire Modeling



Thank You

